

ALASKA DEPARTMENT OF ENVIRONMENTAL CONSERVATION
Division of Spill Prevention and Response
Prevention and Emergency Response Program

SITUATION REPORT
As of 10:00 AM on May 18, 2010

INCIDENT NAME: Princess Kathleen

SITREP #: 22

SPILL NUMBER: 10119904701

LEDGER CODE: 14284160

TIME/DATE OF SPILL: The S/S *Princess Kathleen* grounded and sank off Point Lena on September 7, 1952.

TIME/DATE OF SITUATION REPORT: 2:00 PM on May 18, 2010

TIME/DATE OF THE NEXT REPORT: 2:00 PM on May 21, 2010

TYPE/AMOUNT OF PRODUCT SPILLED: The total volume of number 6 bunker oil and other oils onboard the vessel at the time of sinking is unknown.

LOCATION: Point Lena, Favorite Channel, north of Juneau, Alaska.

CAUSE OF SPILL: The vessel grounded on Point Lena and suffered damage to the forward-most section of the bow. As the tide came in, the vessel flooded from the stern and slid off the point. The vessel now sits at an angle on its port side at a depth ranging from 52 feet at the bow to 134 feet at the stern. Recent increases in the frequency of sheen being reported in the area were investigated and traced to the *Princess Kathleen*, possibly indicating a change in the vessel's condition.

POTENTIAL RESPONSIBLE PARTY (PRP): Undetermined

RESPONSE ACTION: Global Diving and Salvage (Global) continued fuel pumping operations. On May 17, 2010 Global completed fuel removal operations on the final bottom tank.

Operations shifted to the four port wing tanks on May 17. Because the wreck is lying on its port side, recovering fuel from these tanks is operationally different from the previous 10 tanks. Rather than access the tanks through the hull Global is traveling through the interior spaces of the vessel and accessing the tanks through the tank tops. Approximately 10,700 gallons of oil was removed from the number 4 port wing tank. Divers are continuing to circulate warm water through the tank today and recover fuel.

Global has successfully removed recoverable oil from 10 of the 14 fuel tanks, and work continues today on the eleventh tank. The total volume of oil recovered to date is approximately 66,600 gallons. The volume reported includes a percentage of water; the actual volume of fuel recovered will not be known until the product is measured at the disposal and recycling center.

Active booming operations are ongoing to contain the sheen produced by the *Princess Kathleen*. SEAPRO is adjusting the boom as needed to ensure maximum containment and recovery of any visible sheen.

SOURCE CONTROL: Global has installed temporary patches over the exposed starboard portholes to prevent oil trapped within the vessel from escaping. Global has plugged fuel tank vent pipes to prevent the loss of bunker oil during fuel removal operations. Global crews identified and patched several rivets that were leaking oil. In addition to the estimated 66,600 gallons of fuel removed from fuel tanks to date, crews removed an additional 840 gallons from the overhead spaces.

RESOURCES AFFECTED: Shoreline Cleanup Assessment Technique (SCAT) teams are conducting surveys to monitor impacts to sensitive areas. The SCAT team will continue monitoring the shoreline to determine if any impacts are occurring during the fuel removal and cleanup operations.

On Wednesday May 12 strong winds caused damage to the containment boom on site and allowed some sheen and oil contamination to travel north towards Tee Harbor. SCAT will be conducted along this beach today, May 18, to determine the extent of impact. Unified Command representatives have met with a resident whose boat was impacted by oil during the high wind event.

SEAPRO is equipped and authorized to conduct wildlife hazing as necessary. The Unified Command and NOAA have developed a communication plan for when marine mammals are observed in the vicinity. The *Princess Kathleen* is of historic significance and is listed as a historic shipwreck by the State of Alaska Office of History and Archeology.

FUTURE PLANS AND RECOMMENDATIONS: Fuel pumping operations will continue, moving from one fuel tank to the next.

In addition to the bunker fuel, the *Princess Kathleen* carried an unknown quantity of other petroleum products. Historic ship plans document tanks of petroleum like turbine oil, lamp oil and lube oil in the engine room. Global will drill holes through the hull into the upper spaces of the engine room and aft engine room spaces to determine if there is trapped petroleum. Any trapped oil will be pumped from the space. If the tanks do not appear to have leaked, then the divers will access the space and assess the ability to remove the fuel directly from the tanks.

WEATHER: Today: North wind 15 knots becoming south 10 knots in the afternoon. Seas 3 feet with showers. Tomorrow: South wind 10 knots with seas 2 feet or less.

UNIFIED COMMAND AND PERSONNEL:

F.O.S.C. : Capt. Melissa Bert, USCG
S.O.S.C. : Scot W. Tiernan, ADEC

FOR ADDITIONAL INFORMATION CONTACT: Scot Tiernan, ADEC, (907) 465-5378 or JIC at 463-2065.

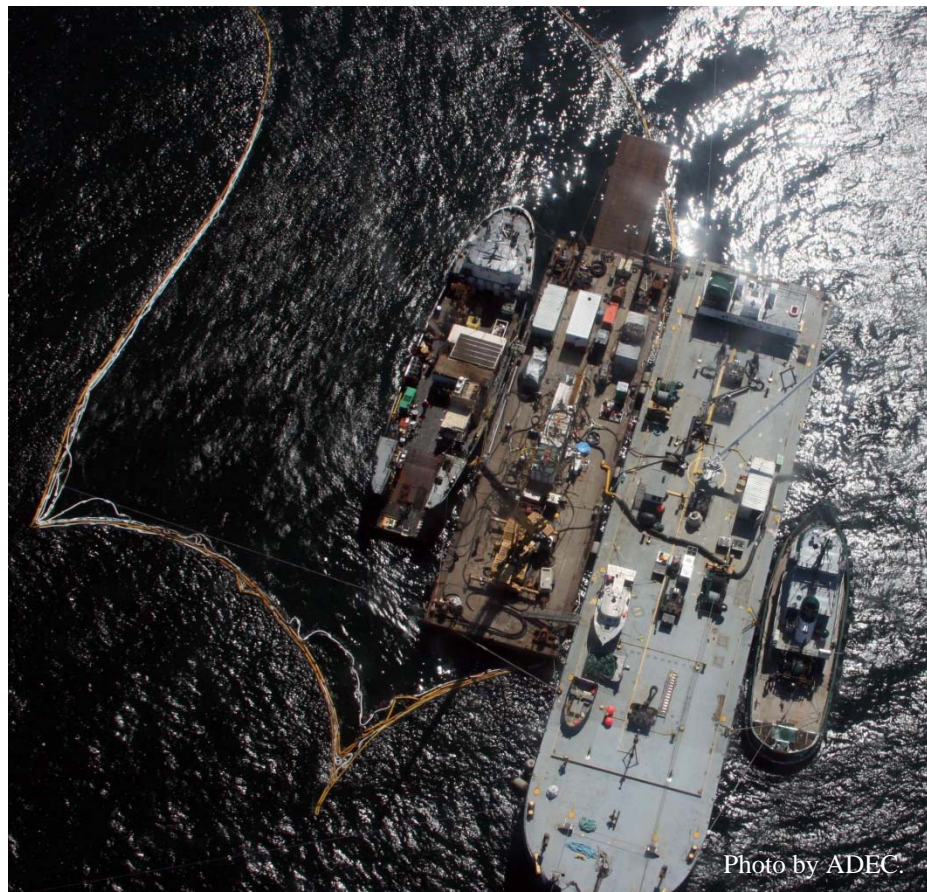
Photographs and other spill information are available for viewing on the Unified Command website:
www.dec.state.ak.us/spar/princesskathleen

AGENCY/STAKEHOLDER NOTIFICATION LIST

This sitrep has been distributed to the following agencies and stakeholders. The situation report was also distributed to the various agency staff listed on the standard distribution list. The receiving agencies listed in the standard distribution list includes: Governor's office, Senator Begich's office, ADF&G, ADNR, SECC, EPA, DOI, NMFS, USFWS, and USFS.

Agency/ Stakeholders	Name	Sent Via	Additional Info	Telephone	Fax
Senate Dist. B	Senator Dennis Egan	Fax	session	465-4947	465-2108
House Dist. 3	Representative Beth Kerttula	Fax	session	465-4766	465-4748
House Dist. 4	Representative Cathy Munoz	Fax	session	465-3744	465-2273
USCG (Sector Juneau)	Capt. Melissa Bert	Email	Melissa.bert@uscg.mil	463-2836	
USCG (Sector Juneau)	Lt. Latarsha McQueen	Email	Latarsha.s.mcqueen@uscg.mil	463-2835	463-2445
USCG (Sector Juneau)	Cdr. Matt Jones	Email	Matt.n.jones@uscg.mil	463-2452	
USCG (Sector Juneau)	Cdr. Kurt Clarke	Email	Kurt.a.clarke@uscg.mil	463-2475	
USCG (Sector Juneau)	MSTC James Highfill	Email	James.L.Highfill@uscg.mil	463-2461	

Agency/ Stakeholders	Name	Sent Via	Additional Info	Telephone	Fax
USDA Forest Service - Juneau Ranger District	District Ranger Pete Griffin	Email	pgriffin@fs.fed.us	789-6244	586-8808
USDA Forest Service - Tongass Env. Engineer	Michele Marie Parker	Email	mmparker@fs.fed.us	772-5850	772-5896
USDA Forest Service - Admiralty Island National Monument	District Ranger Marti Marshall	Email	mmmarshall01@fs.fed.us	789-6202	
NMFS	Jon Kurland	Email	Jon.kurland@noaa.gov	586-7638	586-7358
ADNR	Doug Sanvik	Email	Doug.Sanvik@alaska.gov		
ADF&G	Joe Hitselberger	Email	Joe.Hitselberger@alaska.gov	465-4346	465-4759
Douglas Indian Association	Doug Dobyns, Environmental Planner	Email	DougDobyns@yahoo.com	364-2916	364-2917
Central Council Tlingit and Haida Indian Tribes of Alaska	L. Knight	E-mail	LKnight@ccthita.org		
City and Borough of Juneau	Mayor Bruce Botelho	E-mail	city_clerk@ci.juneau.ak.us	586-5240	586-5385
SEAPRO	Dave Owings	Email	Dave@seapro.org		
SEAPRO	Cheryl Fultz	Email	Cheryl@seapro.org		



Looking down on dive operations on May 17, 2010. From left to right: Landing craft *Glacier*, work barge *Red Cedar*, Foss 248-foot oil barge, tug boat *Haley Foss*.